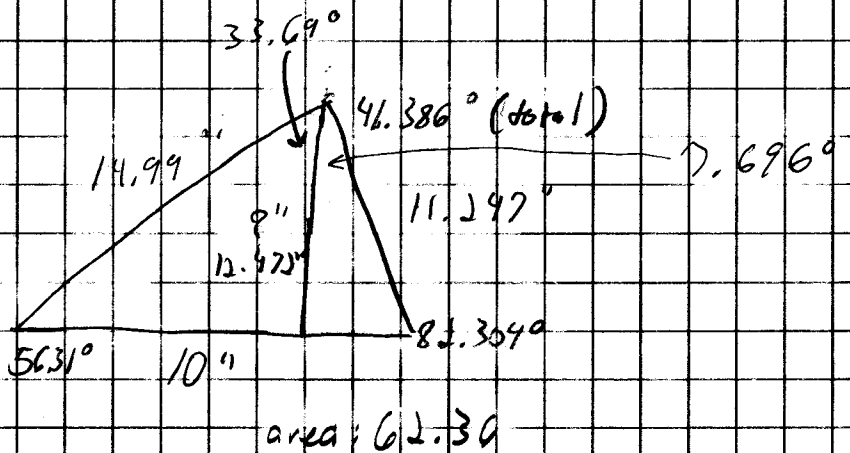


Soh cah toa

$$\sin = \frac{o}{h}$$

$$\cos = \frac{a}{h}$$

$$\tan = \frac{o}{a}$$



$$\cos 33.69^\circ = \frac{?''}{14.99''}$$

$$?'' = 12.472''$$

total area: 357.528

function for the depth of the speaker @ a given distance from the top:

$$\tan 7.7^\circ = \frac{\text{depth}}{\text{distance}}$$

$$\text{distance} \cdot \tan 7.7^\circ = \text{depth}$$

$$\text{Depth} = \text{distance} (\tan 7.7^\circ)$$